



**Collimare**

# Portable Collimare *LED*



## Continuing to lead the industry with **NEW Innovative Designs and Standard Features**

- Cross-Hair Lasers
- Highly Visible LED Light Source
- Multi-Function LED/Laser Control
- Programmable On-Time
- Advanced Thermal Control. *No Fan Required!*
- Active Thermal Protection
- Low Power Operation
- 4 Way Float Mount
- Universal Power Input
- Direct Imaging Target Sheet
- Factory Customer Support
- Made in the USA

Specifications On Back of Sheet.

**Collimare, LLC**  
13401 W 43<sup>RD</sup> DR, Unit #7  
Golden, CO 80403  
P: 303.278.1496  
F: 303.278.1498  
[www.collimare.com](http://www.collimare.com)





# Collimare

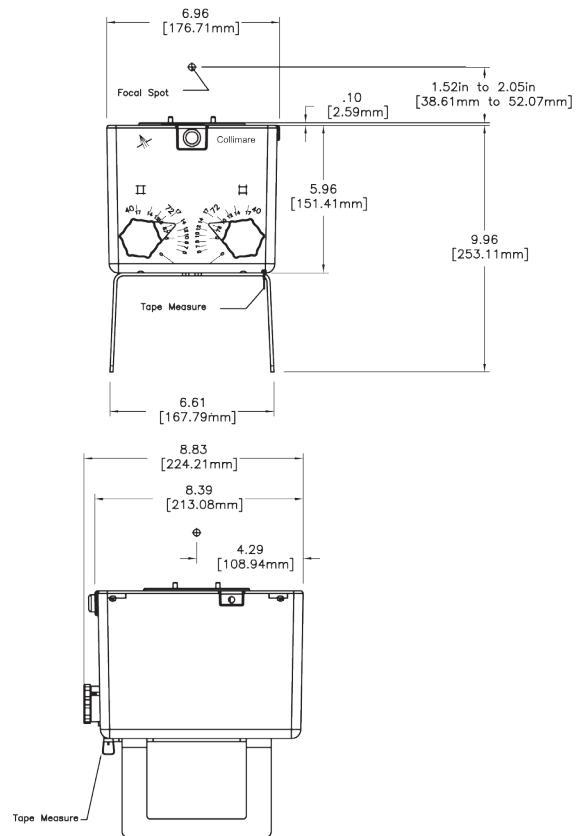
## Portable Collimare *LED*

### Specifications:

1. Size - H x L x W . . . . .6" x 9" x 6"
2. Weight . . . . .<9 lbs.
3. Rating . . . . .150kVp or 125KVP
4. Film Coverage . . . . .Continuously variable 17" x 17" at 36" SID
5. Ray Proofing . . . . .< 50mr/hr @ one meter from focal spot @ 150kVp at 4ma
6. Light Source . . . . .LED (12VDC @ 2A, 24VDC @ 1A or 24VAC @ 1A)
7. Light Output . . . . .> 20 foot-candle @ 40"
8. Edge Contrast . . . . .5:1 minimum
9. Lamp Timer . . . . .30 second standard, up to 120 second programmable
10. Inherent Filtration . . . . .> 1.4mm aluminum equivalent at 80kVp
11. Filter Type . . . . .Fixed
12. Mount Type . . . . .Fixed mount with 90° rotational detents
13. Performance Standards . . . . .21 CFR Part 1020 // UL 60601-1 // IEC 60825-1
14. Alignment "Crosshairs" . . . . .Transverse and Longitudinal Class I Laser Light Lines

### Models:

- CPL-150-0001-C, 150kVp Certified Portable Collimator
- CPL-125-0001-C, 125kVp Certified Portable Collimator
- CPL-VET-0001-NC, Non-Certified Veterinarian Collimator



### Optional Features:

- Accessory Rail Kit
- DAP Meter Rail Kit
- Input Port Shutters

**Collimare, LLC**  
**13401 W 43<sup>RD</sup> DR, Unit #7**  
**Golden, CO 80403**  
**P: 303.278.1496**  
**F: 303.278.1498**  
**www.collimare.com**

